

Alarm 1

Communication Set-Up

Communication set-up is required only if the configuration file is to be written to the controller, using the communication port. If you are only using the program to make or edit a configuration file, communication set-up can be skip.

There are two ways to set-up the communication between your computer and the controller, by means of the Connection Wizard and manually.

To launch the Connection Wizard, click on the Connect button from the Serial Com tab. The Connection Wizard is also automatically launch when you run the software on your computer for the first time. In order to take advantage of this feature, your controller's serial communication options should be set-up as specify by the [required communication settings](#).

The Connection Wizard will scan communication port 1 to 4 on your computer, looking for a controller connecting to it. When it finds one, it will set up that communication port. You are then ready go configure your controller via your computer.

You can also manually configure your computer communication port.



TABLE OF CONTENTS

Part 1: Introduction

[CN77000 Configuration Software For Windows Overview](#)

Part 2: Setup

[Software Installation On Windows 95](#)

[Set-Up Communication Options](#)

Part 3: Configuration

[Hardware Set-Up](#)

[ID Number](#)

[Set Points](#)

[Input Type](#)

[Reading Configuration](#)

[Alarm 1](#)

[Loop Break Alarm](#)

[Output 1](#)

[Output 2](#)

[Ramp & Soak](#)

[Serial Communication](#)

Part 4: Specifications

Hardware Set-Up

ID Number

Input Type

Installation

This application was designed for installation and execution on computers with Windows 95. It should also run on system with Windows NT, but this is neither tested nor guaranteed.

The Connection Wizard will walk you through the communication port set-up for your computer when the program is run for the first time. Thereafter, should you need to reconfigure the communication port, the Connection Wizard can be launch from the Serial Com tab by means of the Connect button. You may also configure the communication port manually. The communication settings can be found in the Serial Com tab.



Connection Wizard In action

Refer to [Set-Up Communication Options](#) for additional details on setting up the communication options.

Loop Break Alarm

Output 1

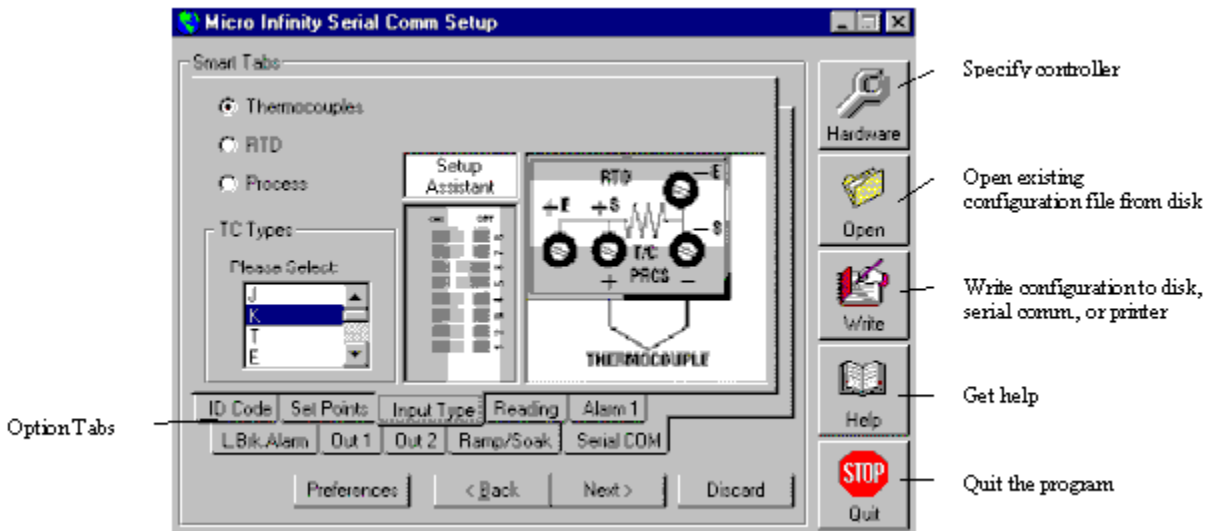
Output 2

Overview

The Windows 95 configuration program for CN77000 is a utility that simplifies the set-up and configuring operation of the controller by giving the user a graphical interface in the familiar Windows environment.

By filling out entries and making choices on a selection of tabs, the user creates configuration for the controller. Only the entries and choices that are important to the user need to be set or change.

Once the user is satisfied with the configuration, it (the configuration) can be save to disk for retrieval at a later time, send to a controller equipped with serial communication option via the computer's COM port, or dispatch to a printer for a hard copy.



Sample Screen Shoot

Ramp & Soak

Reading Configuration

Serial Communication

Set Points

Required Communication Options

Comm Option

Parameters

Baud Rate: 9600

Parity: odd

Data: 7-bit

Stop: 1-bit

Bus Format

Check sum: no

Line Feed: no

Echo: yes

Standard: 232 or 485 (depending on what serial format your controller supports)

Mode: command

Separation: space

Address Setup: for RS485 only, a number between 0000 to 0199

